



# Apple Activities



## Apple Vocabulary

**DWARF TREE:** A small tree which produces fruit of normal size.

**POMOLOGY:** The study of tree fruit, such as apples and pears.

**ENTOMOLOGY:** The study of insects and similar creatures. (This is very important to the apple industry.)

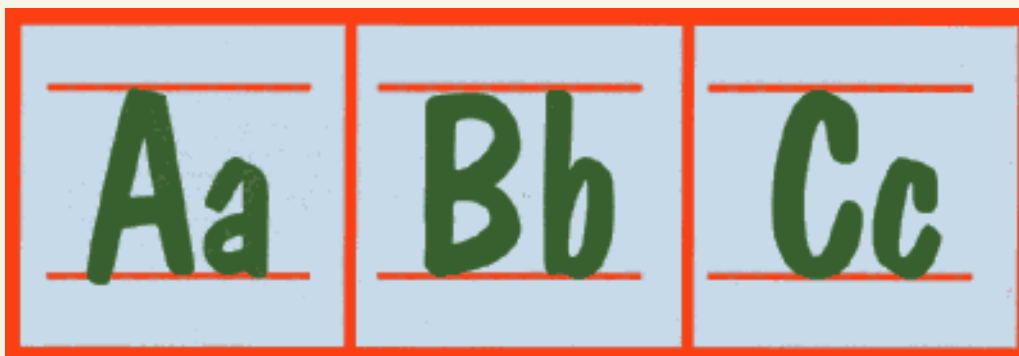
**PASTEURIZATION:** A process used in making apple juice. Juice is heated to a high temperature to help preserve it.

**PLANT PATHOLOGY:** The study of plant diseases.

**GRAFTING:** Used to produce a tree of a specific variety. One piece of apple wood (the variety) is placed into a second piece of apple wood (the rootstock).

**PRUNING:** Branches are cut from trees to improve the tree's structure and shape.

**VARIETY:** The name given to a type of apple, such as Gravenstein, McIntosh or Idared.



[< Back to Table of Contents!](#)